



# GMT MONTHLY MEMBERSHIP PROGRESS REPORT

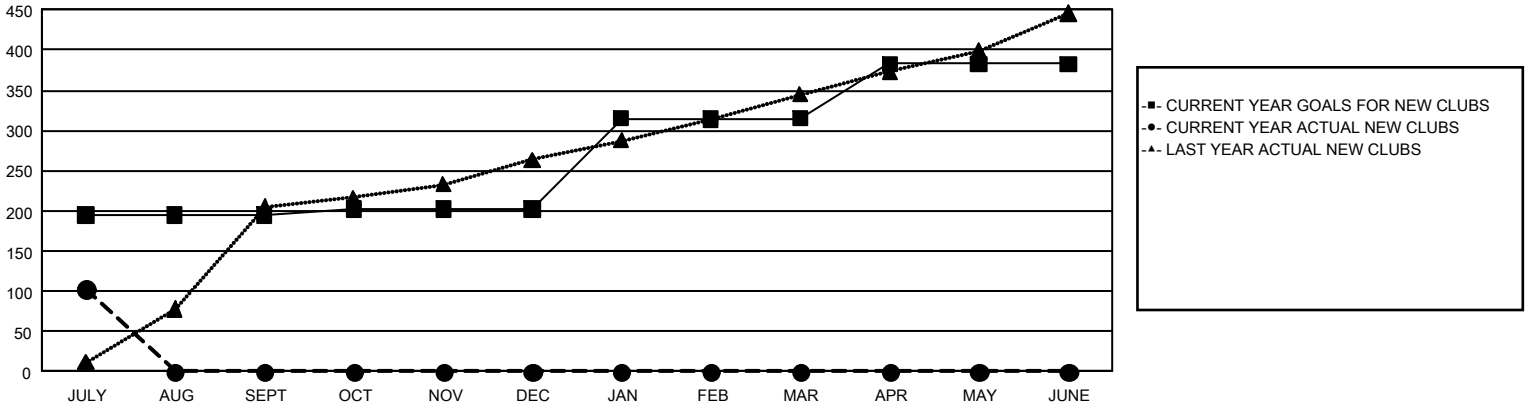
## GAT Constitutional Area 6 - South Asia and Middle East

Results as of: 7/31/2024

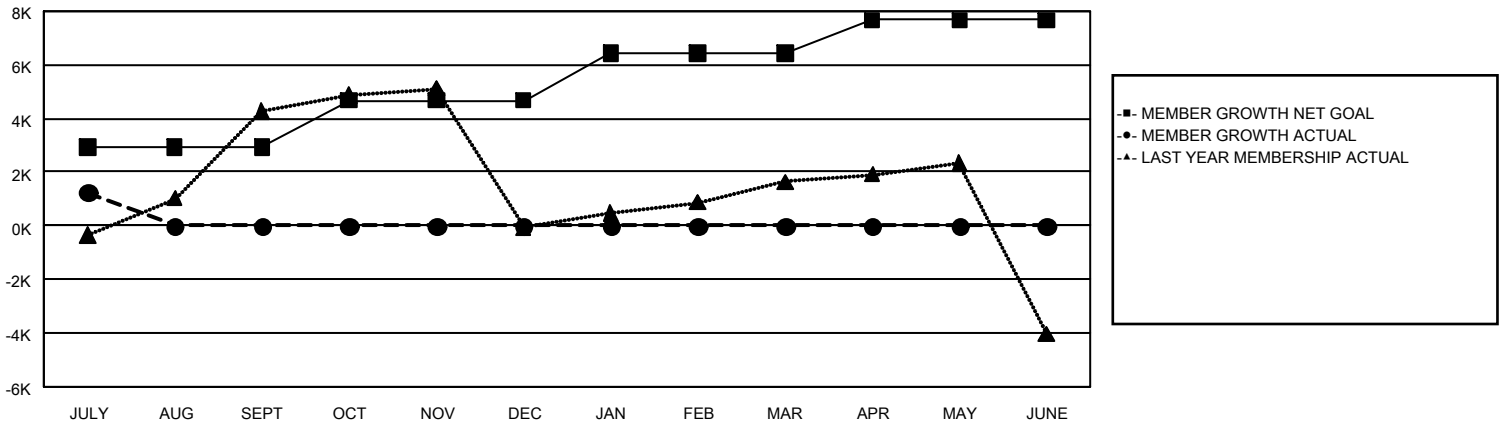
REPORT DOES NOT INCLUDE CLUBS IN UNDISTRICTED AREAS.

Clubs				Members			
RESULTS FOR 2024-2025				RESULTS FOR 2024-2025			
QUARTER	NEW CLUB GOAL	NEW CLUBS	DROPPED CLUBS	QUARTER	MEMBER GROWTH NET GOAL	MEMBER GROWTH ACTUAL	DROPPED MEMBERS ACTUAL (including transfers)
JULY/AUG/SEPT	195	103	22	JULY/AUG/SEPT	2,933	3,633	1,987
OCT/NOV/DEC	7	0	0	OCT/NOV/DEC	1,737	0	0
JAN/FEB/MAR	113	0	0	JAN/FEB/MAR	1,772	0	0
APR/MAY/JUNE	68	0	0	APR/MAY/JUNE	1,228	0	0

**GOALS AND ACTUAL NEW CLUBS CUMULATIVE**



**GOALS AND ACTUAL MEMBERS CUMULATIVE**



<b>DROPPED CLUBS: 22</b>	<b>529 CLUBS OF 3,812 ADDED 1 OR MORE NEW MEMBERS</b>	<b><u>GENDER DISTRIBUTION</u></b> MALE                    63,872 (71.78%) FEMALE                   25,084 (28.19%)
<b><u>DROPPED MEMBERS</u></b> DECEASED                    11 CLUB CANCELLED               238 OTHER                            1,731 <hr/> <b>TOTAL                            1,980</b>	<a href="#">CLICK HERE FOR CUMULATIVE MEMBERSHIP DATA</a>	TOTAL FAMILY UNIT MEMBERS                    46,665  FAMILY MEMBERS PAYING HALF DUES                    31,949